

File Tools Help

- ODBC Main Screen
- ODBC Configuration**
- Data Viewer
- Synchronize
- Exit

- Session 1: Inventory**
- Session 2
- Session 3
- Session 4
- Session 5
- Session 6
- Session 7
- Session 8
- Session 9
- Session 10
- Session 11
- Session 12
- Session 13
- Session 14
- Session 15
- Session 16
- Session 17
- Session 18
- Session 19
- Session 20
- Session 21
- Session 22
- Session 23
- Session 24
- Session 25
- Session 26
- Session 27
- Session 28
- Session 29
- Session 30
- Session 31
- Session 32

Session 1 Enabled

Name:

Default Sync Type:

ODBC data source settings

Select your ODBC data source

DSN:

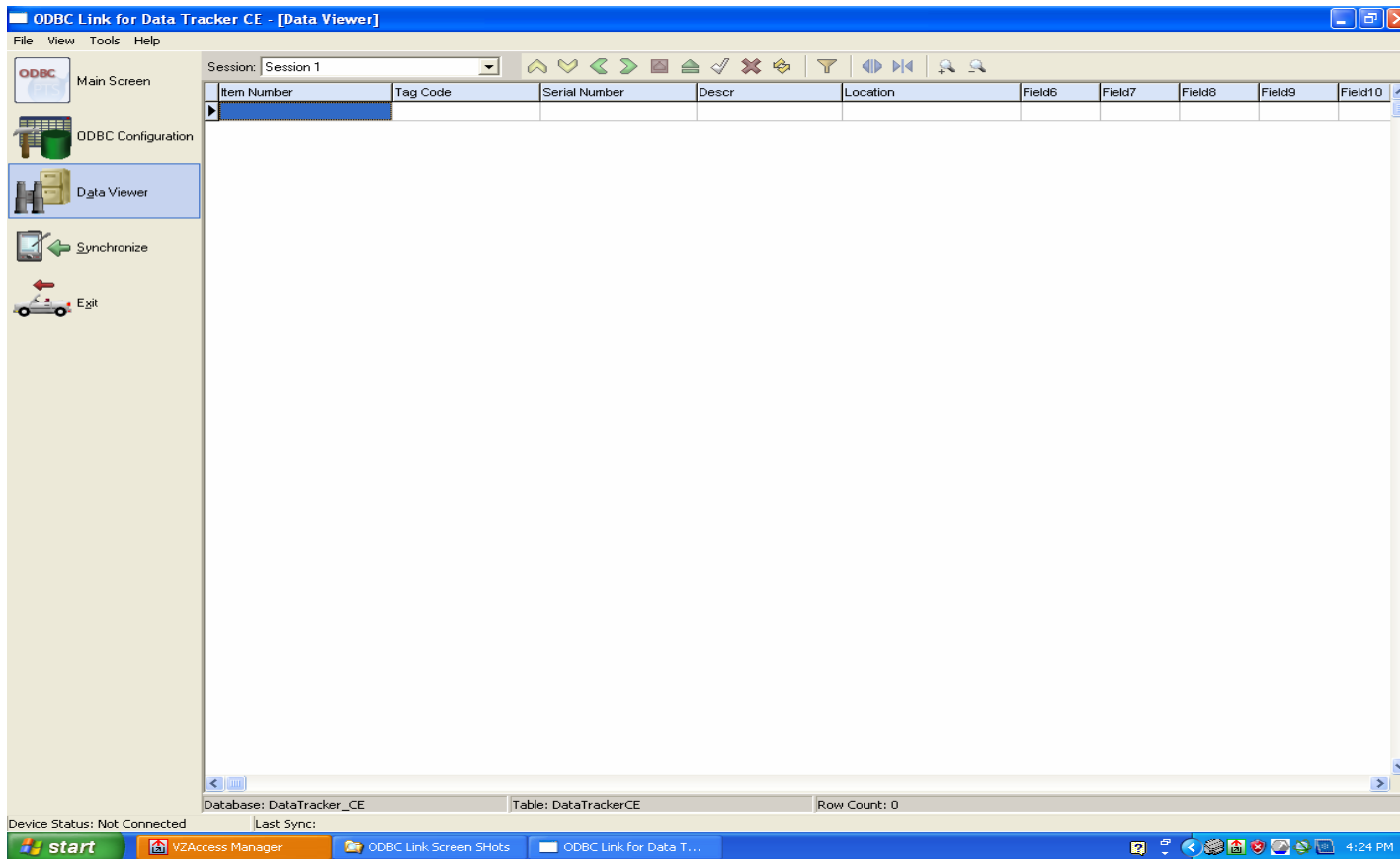
Database Username:

Database Password:

Table:

PDA Field	PC Field
Field01	ID
Field02	Tag Code
Field03	Serial Number
Field04	Description
Field05	Date/Time
Field06	Location
Field07	Make:
Field08	Model:
Field09	Vendor:
Field10	Contact:
Field11	Number:
Field12	
Field13	
Field14	
Field15	
Field16	
Field17	
Field18	

Apply



ODBC Link Data View
(Sync Data from or to the Hand Held Computer)